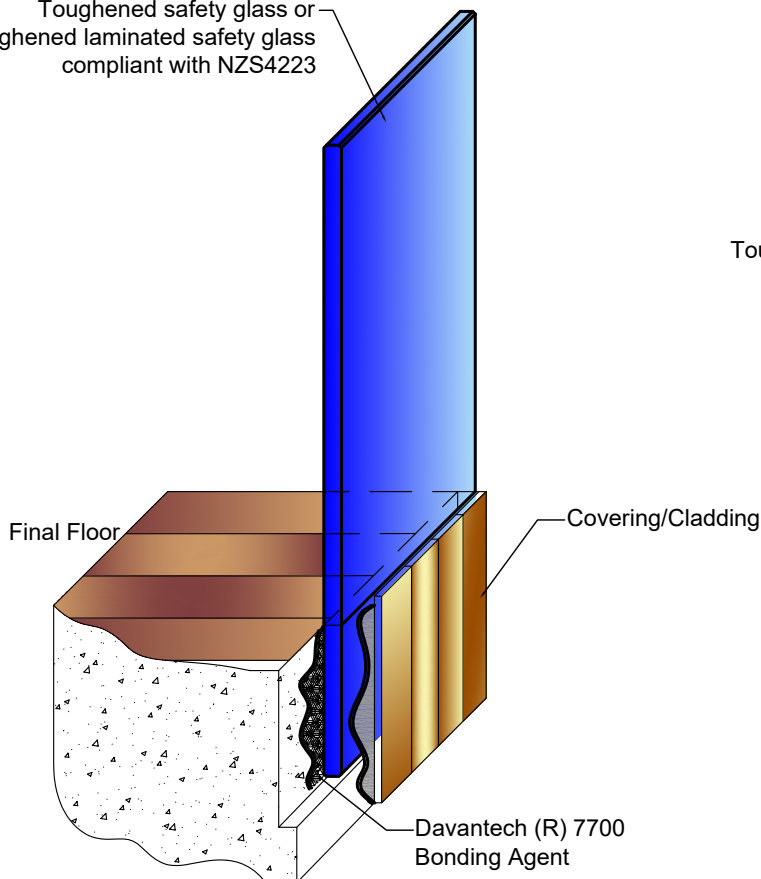




DAVANTECH 5210 face fix system

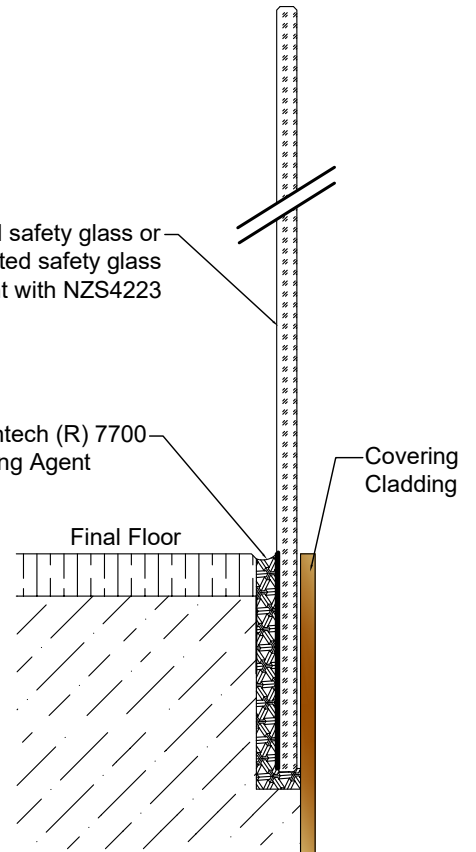
***Zero Mechanical Fixing - Extra Strength
- Commercial and Residential
- For Exterior/Interior use
- Concrete/Timber/Metal Substructures***

Toughened safety glass or
Toughened laminated safety glass
compliant with NZS4223



Toughened safety glass or
Toughened laminated safety glass
compliant with NZS4223

Davantech (R) 7700
Bonding Agent



Technical CAD drawing available.



www.glassforce.co.nz www.davantech.co.nz
Glassforce Ltd.
56 Newtown St. - Christchurch - 03 384 3077 - office@glassforce.co.nz

Drawn:
Scale: A4 NS

